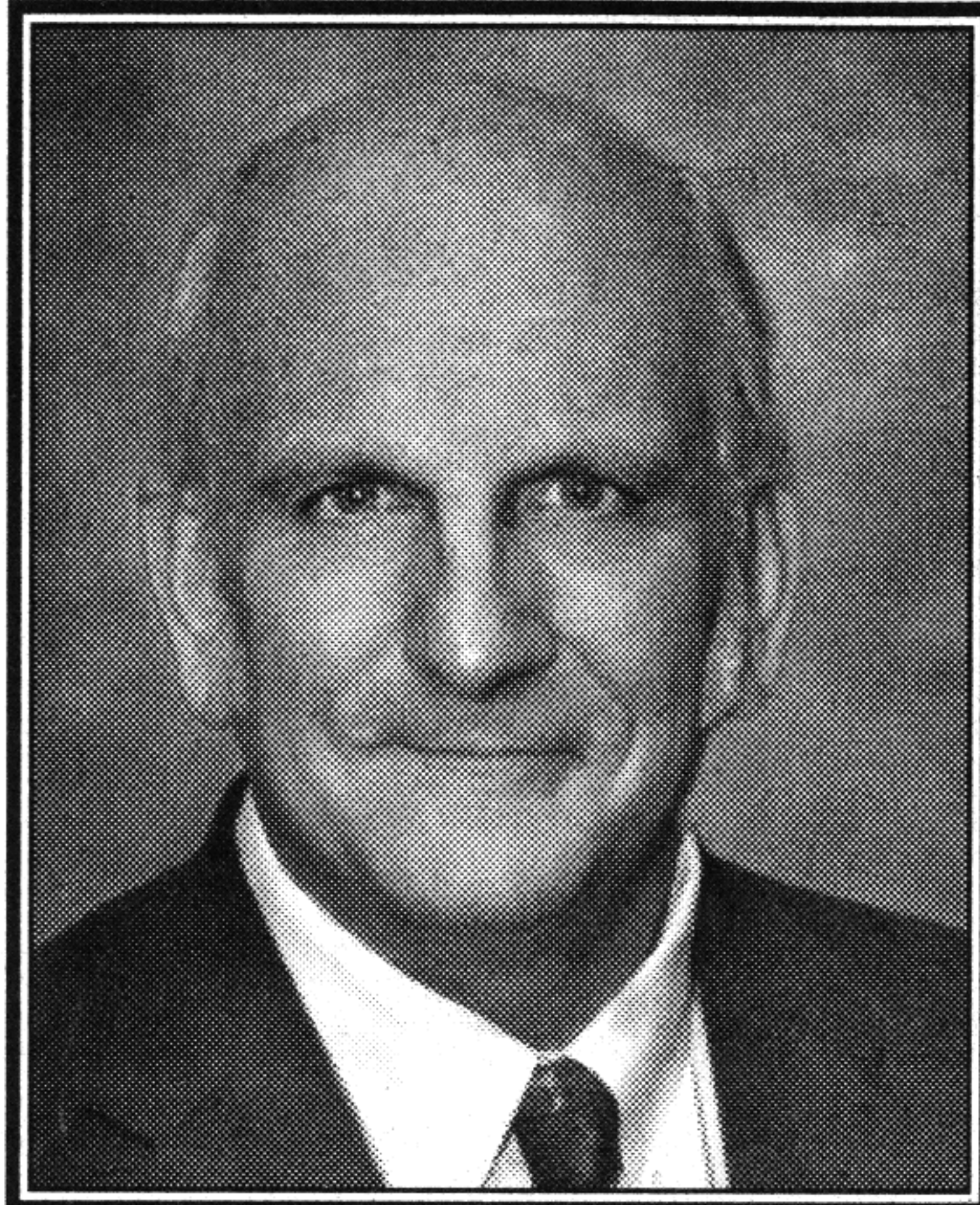
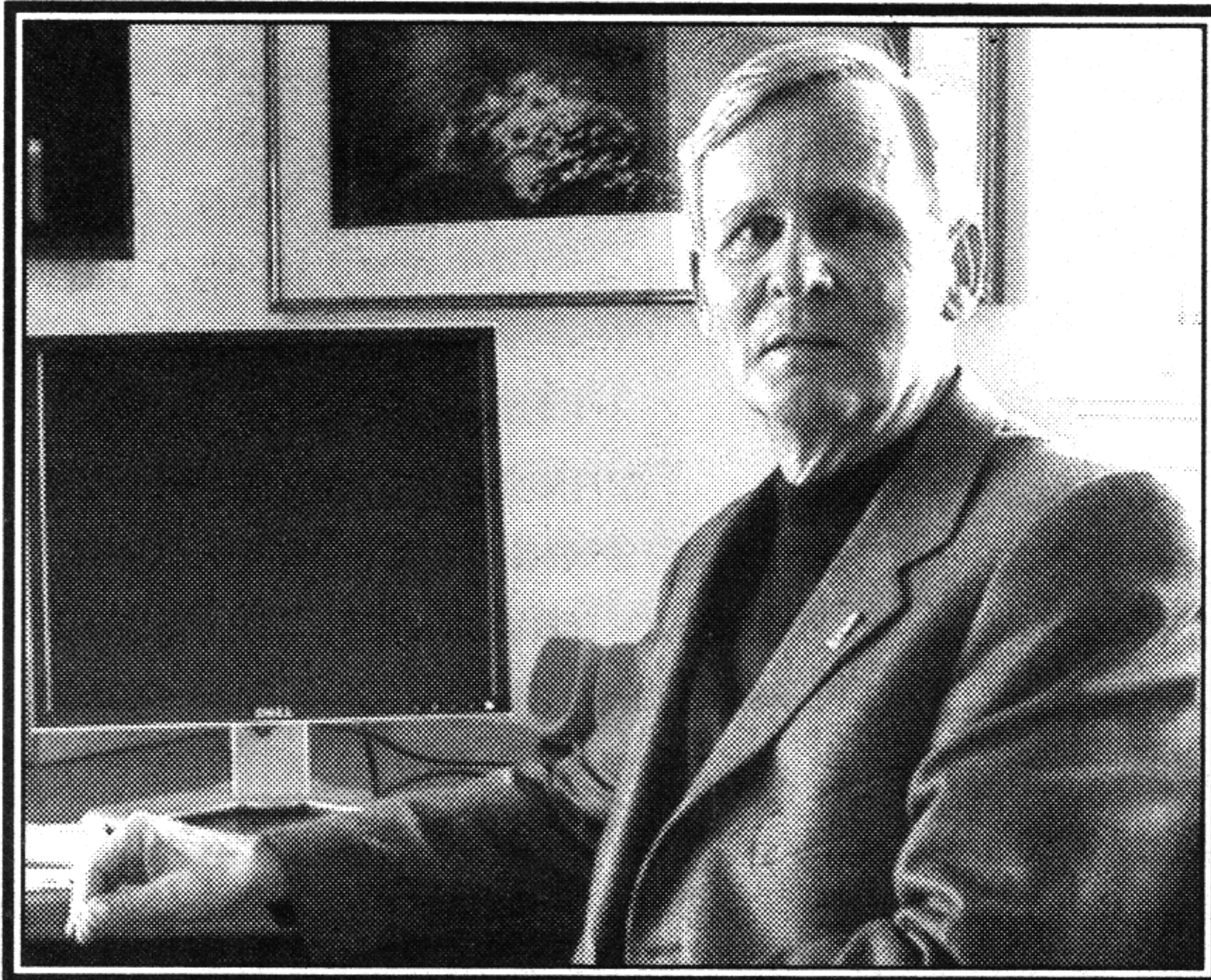


# NEW SHED COUNCIL HELPS PROMOTE LOCAL ECONOMIC DEVELOPMENT

By Carisa Biesecker



"THIS PROGRAM IS ALL ABOUT JOBS AND THE RESULTING ECONOMIC BENEFITS FOR THE ENTIRE REGION," STATES RUSKIN RESIDENT AND CO-FOUNDER OF SOUTH HILLSBOROUGH ECONOMIC DEVELOPMENT (SHED) COUNCIL, FRED JACOBSEN. RIGHT: CO-FOUNDER OF SHED JIM HOSLER.

"South Hillsborough County has a long history of innovation and self-reliance, and we are looking to further rekindle that quality of pulling up one's own bootstraps to get ahead," states Apollo Beach resident and co-founder of South Hillsborough Economic Development (SHED) Council, Fred Jacobsen.

In an effort to create local jobs, he and Jim Hosler have teamed up to form SHED in hopes to entice businesses to relocate to South Hillsborough County.

"SHED [introduces] the first time ever that an independent economic development group in South Hillsborough County will be helping to market and develop with job growth in Hillsborough County, south of the Alafia," adds

Hosler.

"South Hillsborough has a sizeable population who now must travel out of the area for jobs, and who would be very happy to work for a local employer," Jacobsen comments. "The mission is to attract employment opportunities to South Hillsborough County – jobs."

With the slogan, "Connecting investment with opportunity in South Hillsborough County," the two residents plan to make their Website for SHED more comprehensive in terms of the positive aspects of moving to this area. Besides this, plans to distribute mailers to businesses and self-promote the area within the confines of national tradeshow are in the works. Everything will be designed around

the unique offerings of South Hillsborough County, including its reasonable pricing on land, its accessibility to I-75, its local education facilities - such as the SouthShore Hillsborough Community College campus and the South County Career Center training facility - offering trainings in tandem with businesses and more.

Currently, the council's aim is positioned towards the "Green Industry," vying for businesses to relocate here and incorporate jobs having to do with sustainable energy, conservation and agriculture, according to Jacobsen.

"When people come more than

50 miles away just to visit South Hillsborough County, we will have been successful. More jobs mean fewer unoccupied homes and, therefore, more reason for shops, services and another hospital to open up," concludes Jacobsen.

Venturing January to be the month the council will hold its first public informational meeting, residents interested in the proposed project are welcome to register for the council's e-newsletter, donate towards the endeavor or join as a member, with various tiers being available.

For more information, visit <http://shedcouncil.com>.

DECEMBER 2009 VOLUME 7, ISSUE 12

Riverview/Apollo Beach

*Osprey*  
**OBSERVER**

